

## REST EASY DISCOUNTED ROOM RATE

Please present this voucher to the hotel's main desk at check-in to receive the Rest Easy discounted room rate.

Hotel: \_\_\_\_\_

Registering Guest Name:  
\_\_\_\_\_

Date of Hotel Registration: \_\_\_\_\_

Anticipated Length of Stay: \_\_\_\_\_

Number of Guests: \_\_\_\_\_

Daytime Phone: \_\_\_\_\_

Home Address:  
Street \_\_\_\_\_  
City, State, Zip \_\_\_\_\_

Reservations are made on a first-come, first-served basis. Guests are responsible for paying the hotel or inn directly. Rest Easy room rates may not always be available and are the responsibility of the individual hotel or inn.

## What Is the Rest Easy Program?

To accommodate patients and families traveling to APD from great distances or wishing to stay close to the hospital overnight, APD has developed the Rest Easy Program.

This provides basic information of local lodging facilities that have expressed a willingness to offer specially discounted room rates, when available, to meet the needs of those who wish to stay close to the hospital.

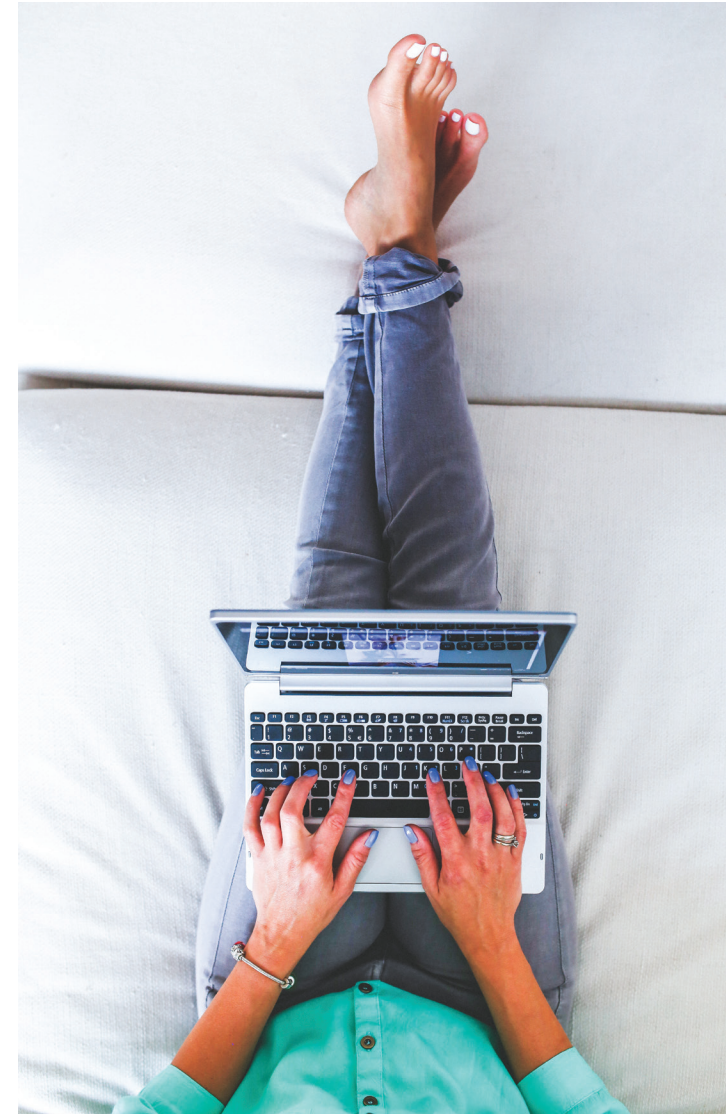
**APD wants you to rest easy.**



**ALICE PECK DAY  
MEMORIAL HOSPITAL**

A Dartmouth-Hitchcock Affiliate

# REST EASY



10 Alice Peck Day Drive, Lebanon, NH  
603-448-3121 • [AlicePeckDay.org](http://AlicePeckDay.org)



**ALICE PECK DAY  
MEMORIAL HOSPITAL**  
A Dartmouth-Hitchcock Affiliate

# LOCAL INNS & HOTELS

## PARTICIPATING INNS & HOTELS

Since 1932, Alice Peck Day Memorial Hospital has been the community hospital of the Upper Valley, delivering high-quality health care in a friendly environment where patients come first.

In line with that mission, we have developed the Rest Easy Program to help patients, families and visitors stay overnight close to our hospital at specially discounted rates, when available from the lodging facility.

### Reservations

Please identify yourself as a patient or family member of APD when making your reservation and ask for the Rest Easy rate. Please bring the completed voucher with you to the participating facility.

### Transportation

Public transportation to and from each facility are available via taxi.

- ▶ Big Yellow Taxi (603) 643-8294
- ▶ Twin State Cab (603) 252-7878
- ▶ [www.Uber.com](http://www.Uber.com)

Alice Peck Day Memorial Hospital has no official affiliation with any of these businesses. This brochure is provided as a courtesy for our patients and their families.

10 Alice Peck Day Drive, Lebanon, NH  
603-448-3121 · [AlicePeckDay.org](http://AlicePeckDay.org)



These participating inns and hotels are within approximately 10 miles of APD. For reservations and directions, please call the lodging facility directly.

Baymont Inn  
(603) 298-8888

Comfort Inn  
(802) 295-3051

Courtyard by Marriott  
(603) 643-5600

Day's Inn  
(603) 448-5070

Element Hotel  
(603) 448-5000

Fairfield Inn and Suites  
(802) 291-9911

Fireside Inn and Suites  
(603) 298-5900

Hampton Inn  
(802) 296-2800

Hanover Inn  
(603) 643-4300

Holiday Inn Express and Suites  
(802) 299-2700

Hotel Coolidge  
(802) 295-3118

Marriott Residence Inn  
(603) 643-4511

Norwich Inn  
(802) 649-1143

Six South Street Hotel  
(603) 643-0600

Super 8 Motel  
(802) 295-7577

The Maynard House  
A friendly and affordable nonprofit house providing homelike lodging for patients and their families. Reservations required.  
(603) 643-3277

The Rest Easy Program provides information about local lodging options for our patients and their families.

*APD wants you  
to rest easy.*